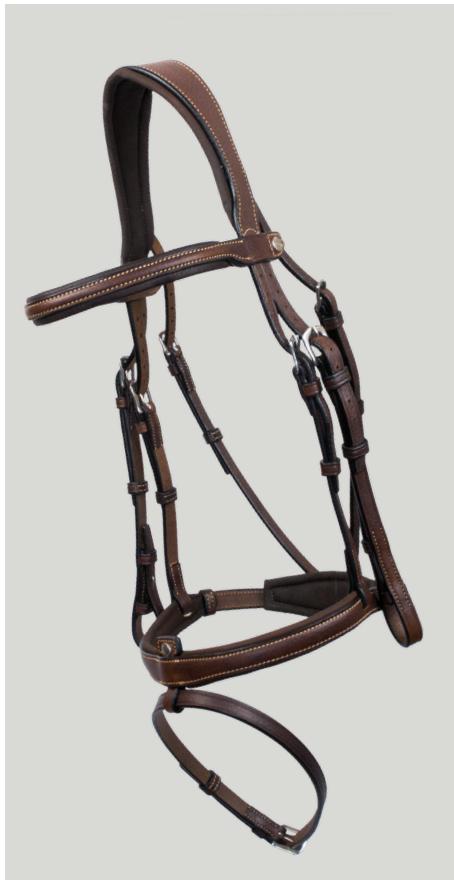


Grained Leather Flash Noseband

SNAFFLE BRIDLE



Description

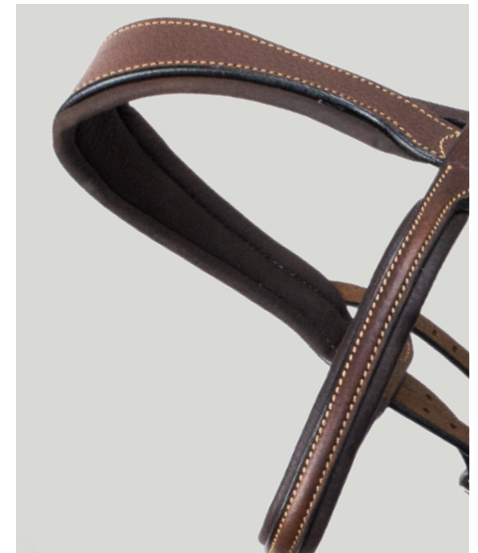
Flash noseband snaffle bridle in grained leather with anatomic headpiece (with reins)

Sizes

1 (cob) - 2 (full)

Colors & finishings

Malt - Cream stitching
Stainless buckles
Oiled before shipping



Product's ♦

Headpiece:

Anatomic headpiece, includes noseband cheek pieces to avoid extra thickness and pressure on the pole.

Noseband:

Flash noseband, with wide, soft padding and protection tab under closing buckles to avoid any rub. Flash strap attached with a "T" loop removable to easily change the flash noseband into a cavesson.

Leather:

Antarès bridework line is made in French full grain leather especially selected and developed for Antarès by the

tannery Arnal in Rodez France. Width and density of the hides are strictly controlled and the vegetable tanning process, based on chestnuts, is especially developed for bridework to insure its longevity and avoid stretching. Except from pigmentation, the leather grain is not altered during tanning and finishing processes to guarantee its exclusive softness and resistance.

* Delivered in an Antarès bridle bag
With rubber reins 5/8"